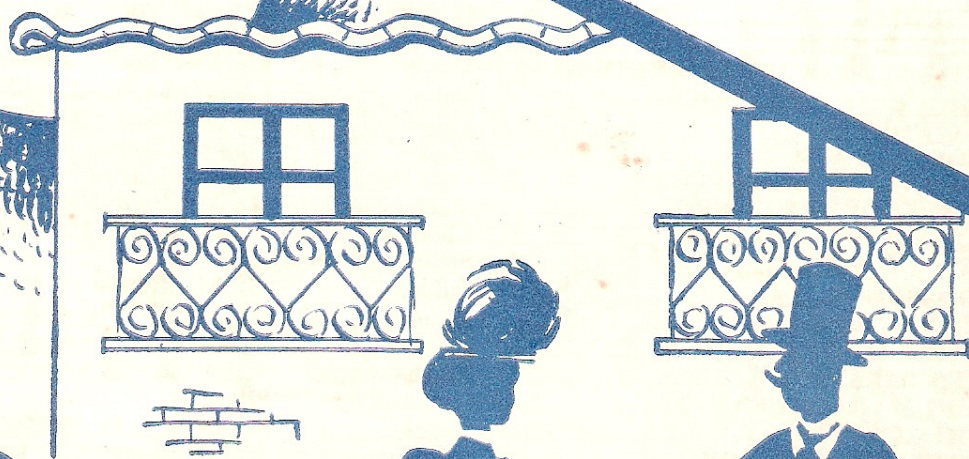


Ernesto Nazareth

Dedicado a minha prima Aracy Nazareth Montel

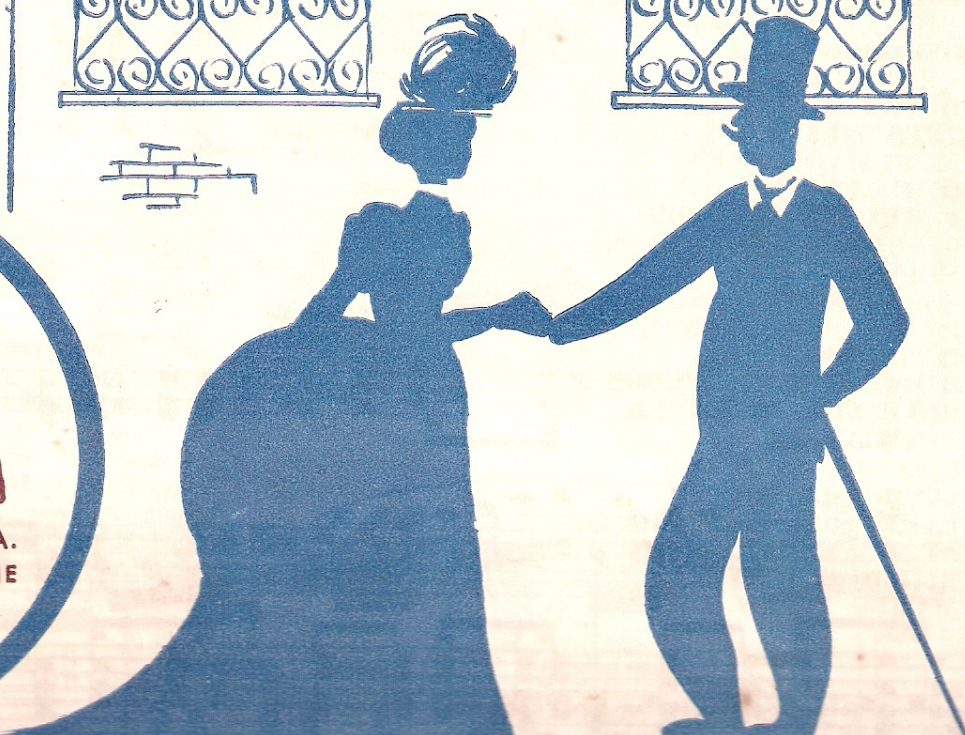
Cavaquinho Porque Choras? Chôro



N. 3308



Editorial Mangione S. A.
Sucessora de E. S. MANGIONE



Dedicado a minha prima Aracy Nazareth Montel

CAVAQUINHO PORQUE CHORAS?

Chôro

ERNESTO NAZARETH

PIANO

The first system of the piano accompaniment is written in 2/4 time with a key signature of two flats (B-flat and E-flat). It begins with a piano (*f*) dynamic marking. The right hand features a melodic line with eighth-note patterns and a fermata over the first measure. The left hand provides a steady accompaniment of eighth notes.

The second system continues the piano accompaniment with similar eighth-note patterns in both hands. The right hand includes a fermata over the first measure.

The third system of the piano accompaniment maintains the eighth-note accompaniment in the left hand and the melodic line in the right hand, with a fermata at the beginning.

The fourth system concludes the piano accompaniment with a double bar line. The word "FIM" is written below the staff. The right hand has a first ending bracket and a second ending bracket. The left hand continues with eighth notes.

The fifth system of the piano accompaniment features a melodic line in the right hand with a fermata at the start, and a steady eighth-note accompaniment in the left hand.

The sixth system of the piano accompaniment ends with a double bar line. The right hand has a melodic line with a fermata, and the left hand has eighth notes. The word "sec" is written below the staff, followed by a fermata and the word "rit." indicating a ritardando.

8

a tempo

8

1 2

Dal S al

8

p

8

ff

8

p

cresc.

8

f *ff*